



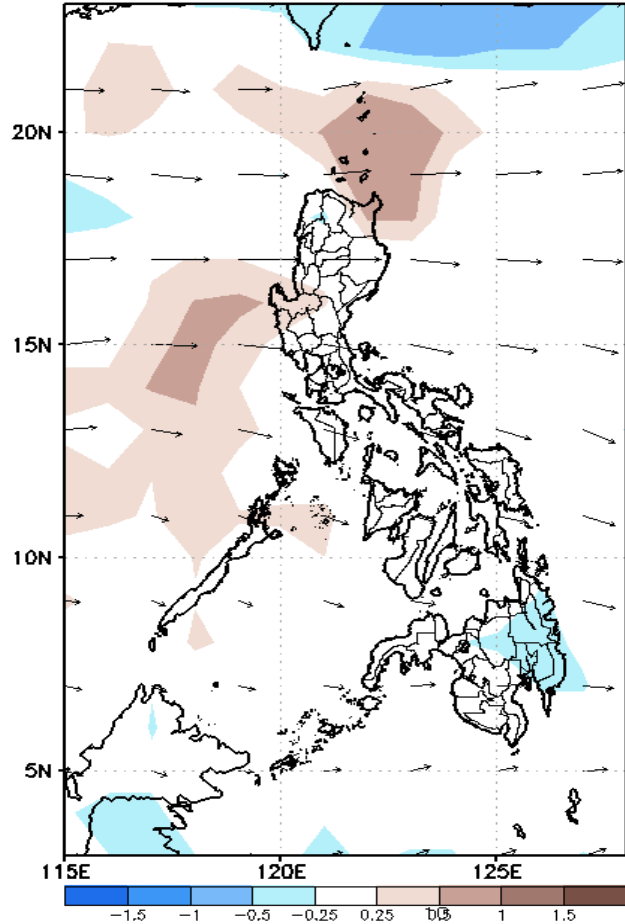
Week 1 & Week 2 Forecast for the Philippines using GEFS Model



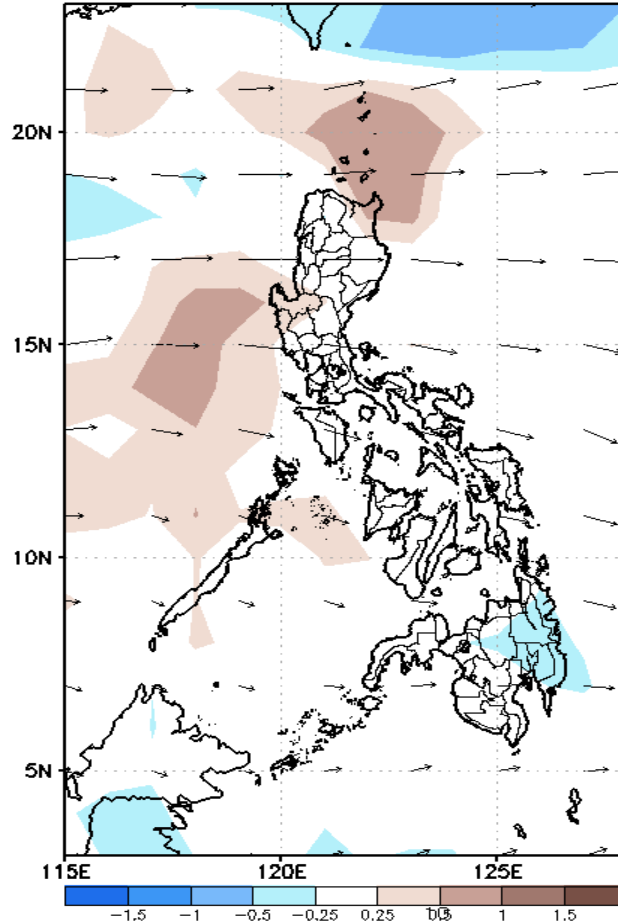
GEFS Week-1 Forecasts: Divergence & Wind Anomaly

Week 1: Nov 29--Dec 05, 2021

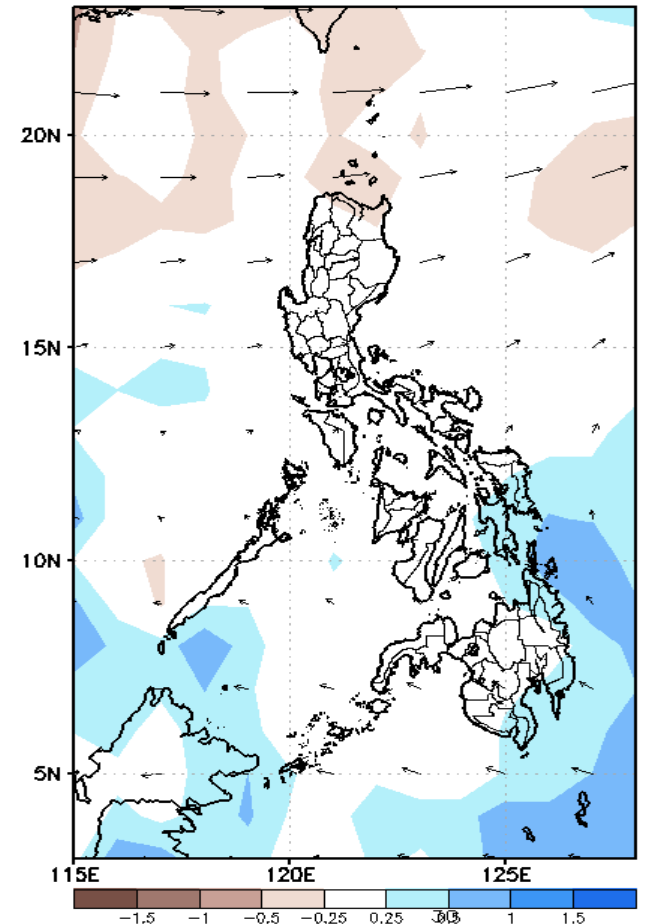
GEFS Week-1 850-hPa Divergence and Wind Anom
Valid: 20211129 - 20211205



GEFS Week-1 700-hPa Divergence and Wind Anom
Valid: 20211129 - 20211205



GEFS Week-1 200-hPa Divergence and Wind Anom
Valid: 20211129 - 20211205

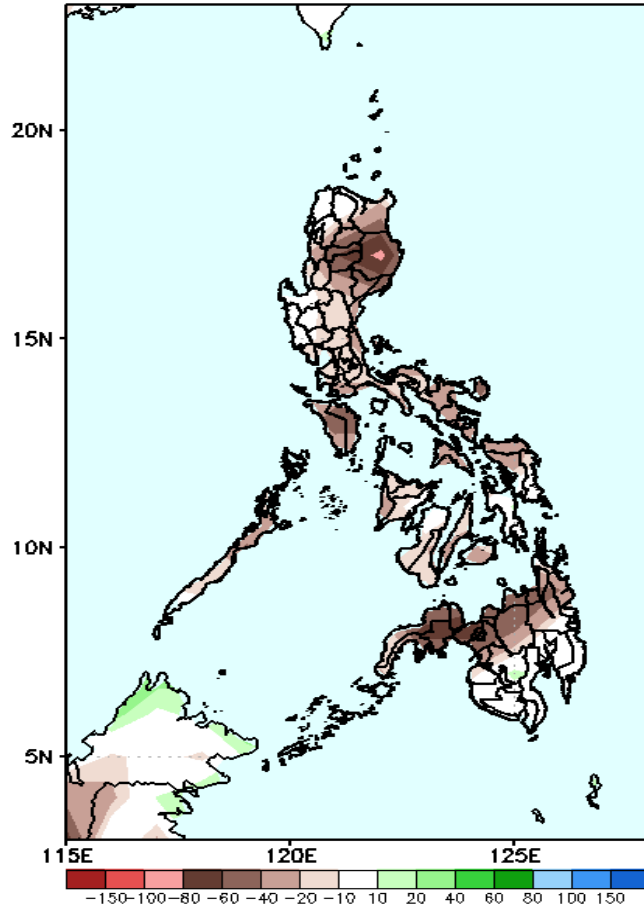


Upper and low level Divergence suggest likelihood of light to moderate precipitation in the eastern sections of Visayas and Mindanao. Northeast Monsoon affecting the eastern sections of Luzon while Easterlies affecting the rest of the country during the forecast period.

Precipitation Anomaly and Exceedance Probability > 25/50 mm

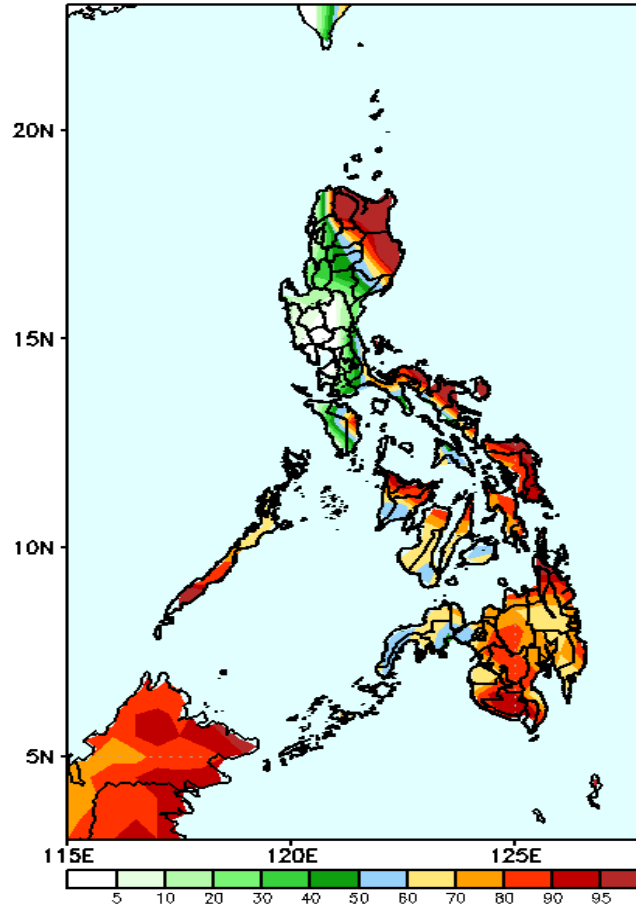
Week 1: Nov 29--Dec 05, 2021

GEFS Week-1 Precip Anomaly
Valid: 20211129 - 20211205



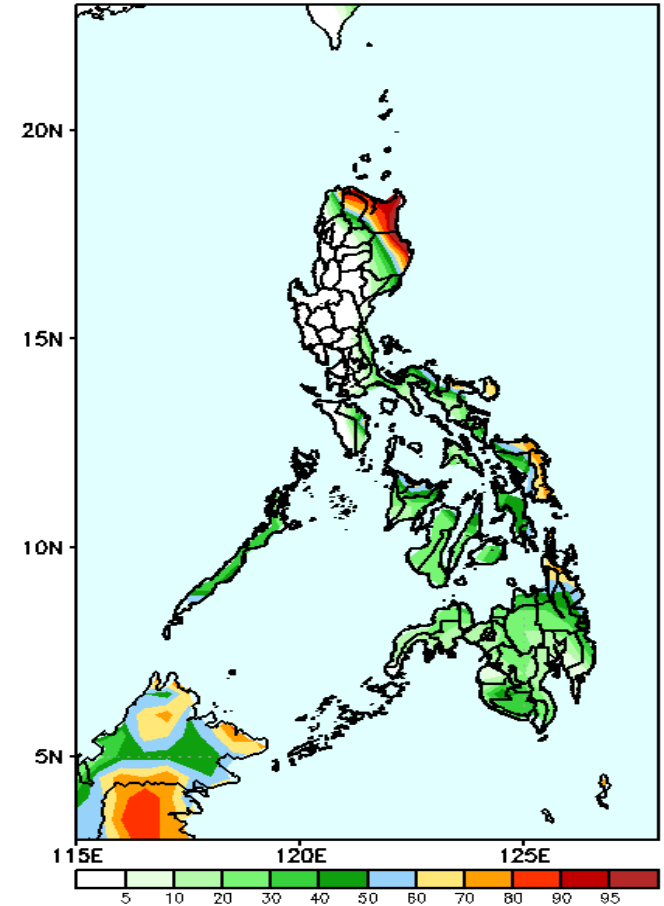
Rainfall deficit of 20-80mm is expected in most parts of the country especially in Isabela during the forecast period.

GEFS Week-1 Exceedance Prob. > 25mm
Valid: 20211129 - 20211205



High probability of rainfall to exceed 25mm in Apayao, Cagayan, Isabela, part of Occ. Mindoro, Quezon, Bicol Region and most parts of Visayas and Mindanao while less likely for the rest of Luzon during the forecast period.

GEFS Week-1 Exceedance Prob. > 50mm
Valid: 20211129 - 20211205

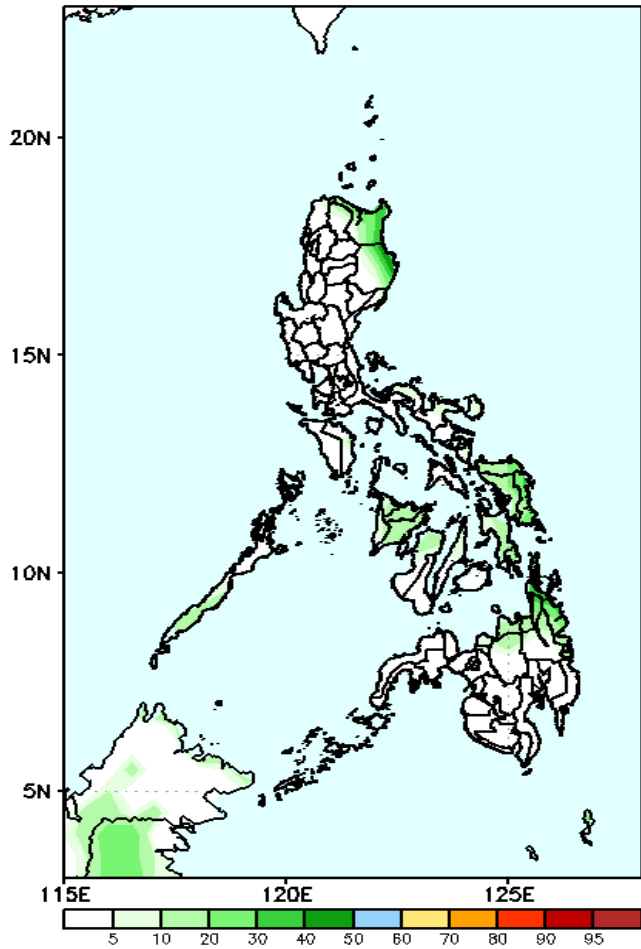


60-95% probability of rainfall to exceed 50mm in Apayao, Cagayan, Isabela, Catanduanes, Northern & Eastern Samar and northern parts of CARAGA while less likely for the rest of the country during the forecast period.

Exceedance Probability > 100/150/200 mm

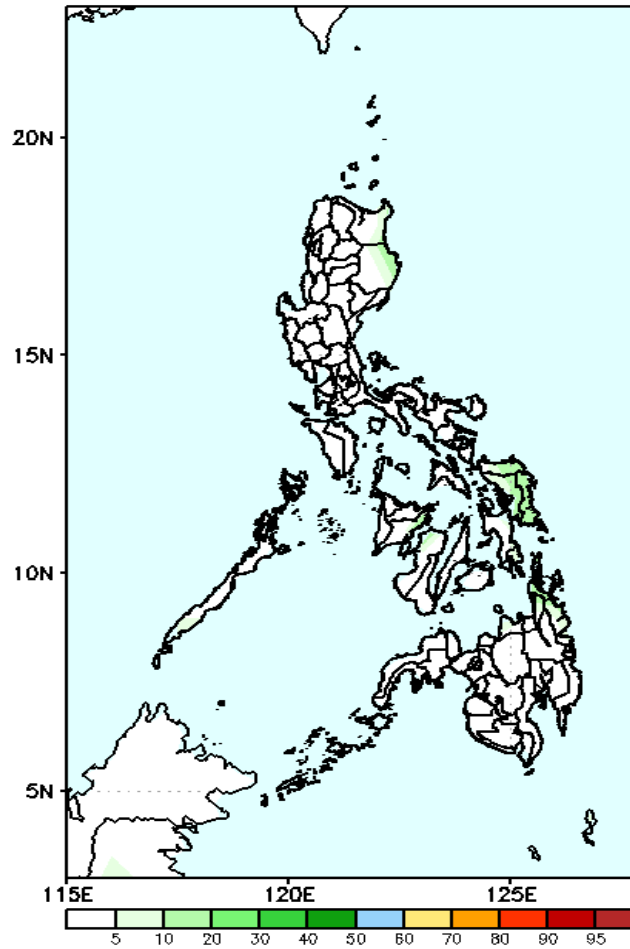
Week 1: Nov 29--Dec 05, 2021

GEFS Week-1 Exceedance Prob. > 100mm
Valid: 20211129 - 20211205



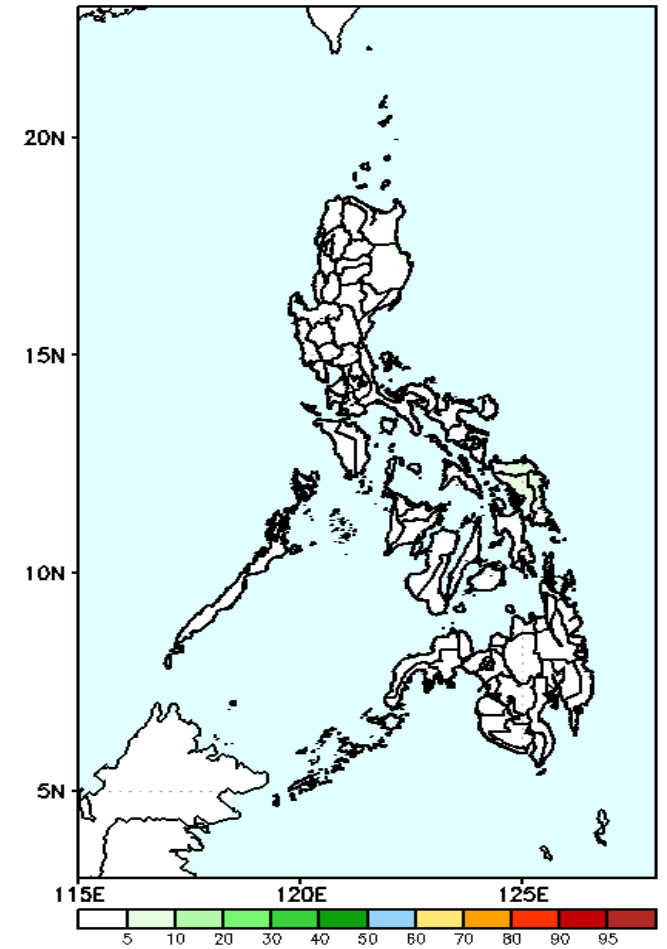
Less probability of rainfall to exceed 100mm in most parts of the country is expected during the forecast period.

GEFS Week-1 Exceedance Prob. > 150mm
Valid: 20211129 - 20211205



Less probability of rainfall to exceed 150mm in most parts of the country is expected during the forecast period.

GEFS Week-1 Exceedance Prob. > 200mm
Valid: 20211129 - 20211205

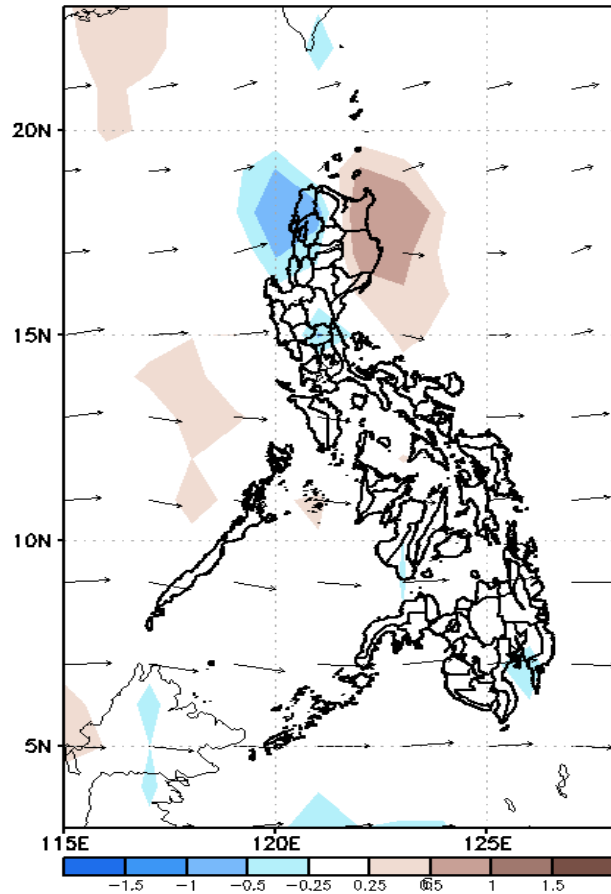


Less probability of rainfall to exceed 200mm in most parts of the country is expected during the forecast period.

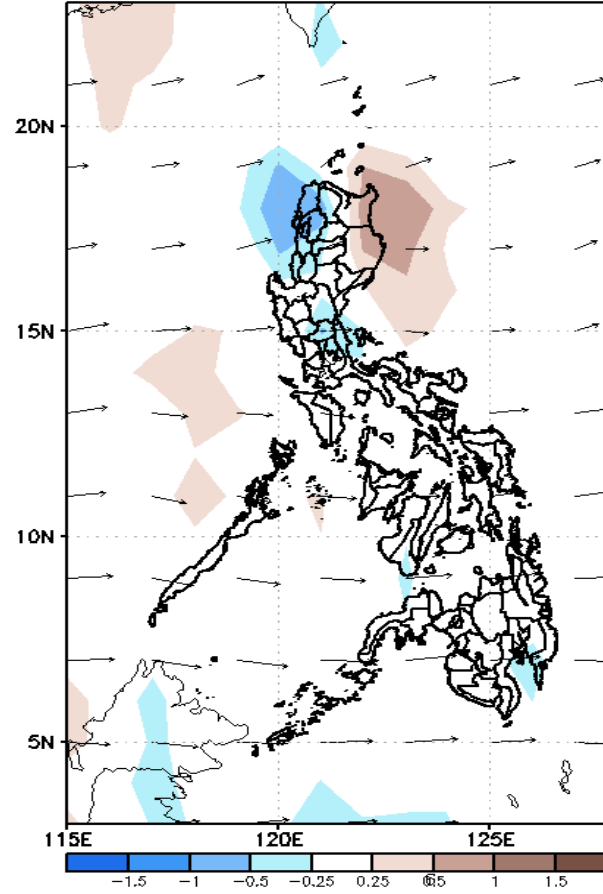
GEFS Week-2 Forecasts: Divergence & Wind Anomaly

Week 2: Dec 06-12, 2021

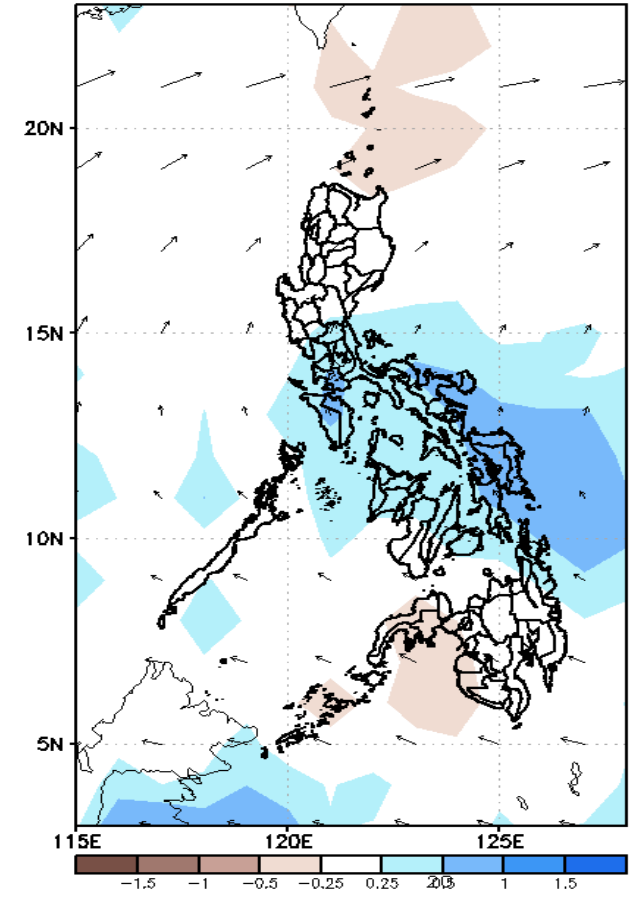
GEFS Week-2 850-hPa Divergence and Wind Anom.
Valid: 20211206 - 20211212



GEFS Week-2 700-hPa Divergence and Wind Anom.
Valid: 20211206 - 20211212



GEFS week-2 200-hPa Divergence and Wind Anomc
Valid: 20211206 - 20211212

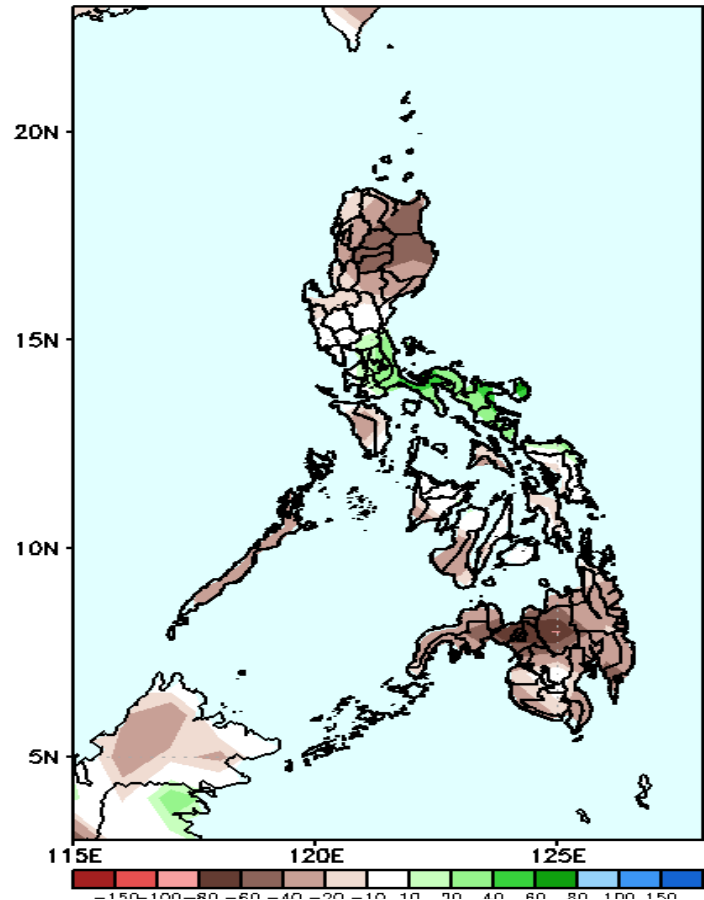


Upper and low level Divergence suggest likelihood of light to moderate precipitation in most parts Southern Luzon and Visayas. Northeast Monsoon affecting the eastern sections of Luzon and Visayas while Easterlies affecting the rest of the country during the forecast period.

Precipitation Anomaly and Exceedance Probability > 25/50 mm

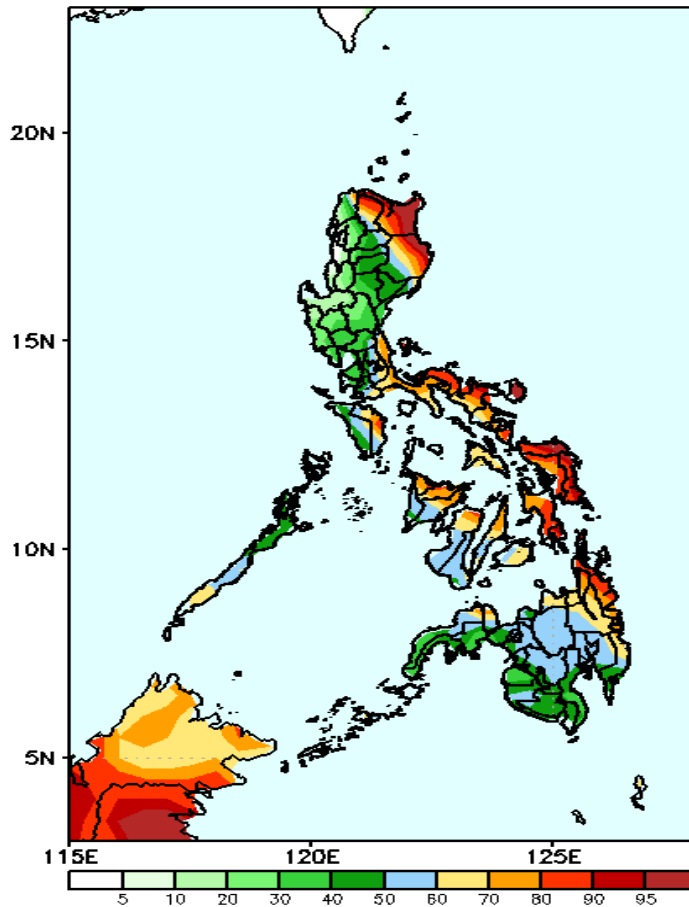
Week 2: Dec 06-12, 2021

GEFS Week-2 Precip Anomaly
Valid: 20211206 - 20211212



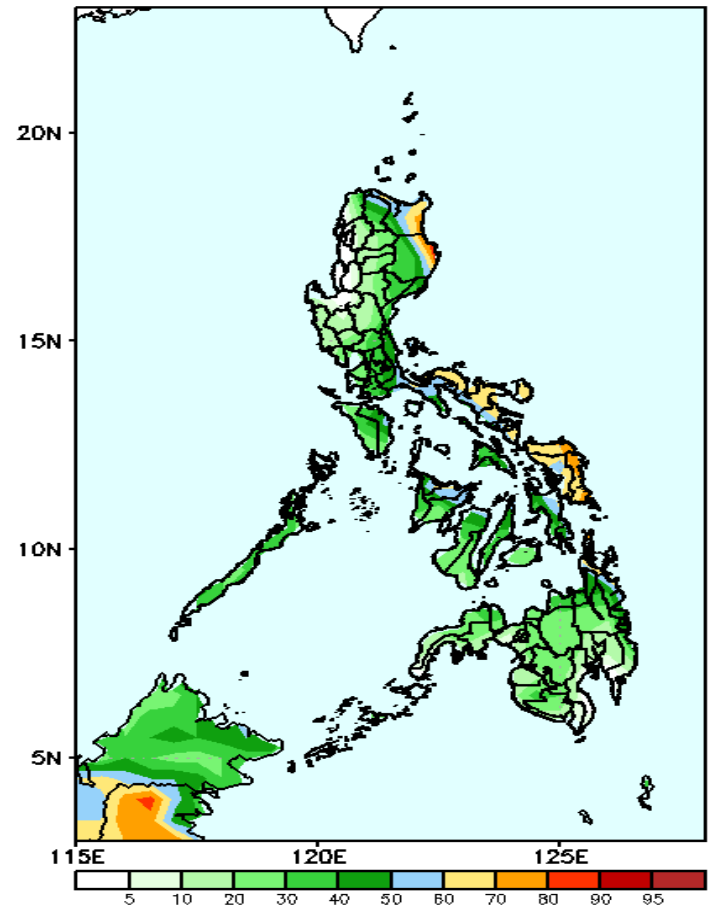
Rainfall deficit of 20-80mm is expected in most parts of the country except in CALABARZON & Bicol region where 40-80mm increase of rainfall during the forecast period.

GEFS Week-2 Exceedance Prob. > 25mm
Valid: 20211206 - 20211212



High probability of rainfall to exceed 25mm in Apayao, Cagayan, Isabela, most parts of Southern Luzon, Visayas and eastern & central Mindanao while less likely for the rest of the country during the forecast period.

GEFS Week-2 Exceedance Prob. > 50mm
Valid: 20211206 - 20211212



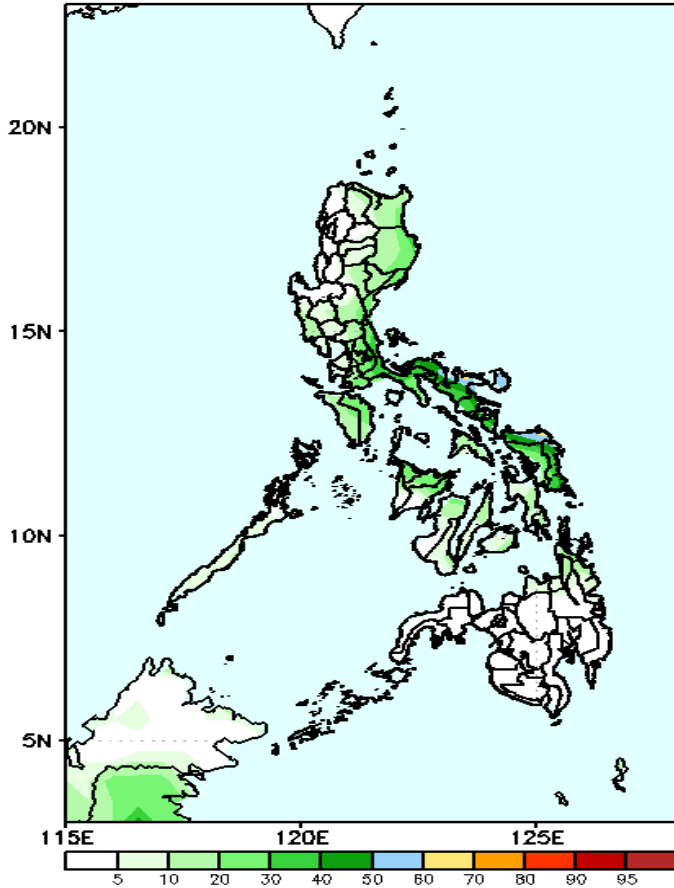
60-85% probability of rainfall to exceed 50mm in Cagayan, Isabela, Bicol Region and Samar Provinces while less likely for the rest of the country during the forecast period.



Exceedance Probability > 100/150/200 mm

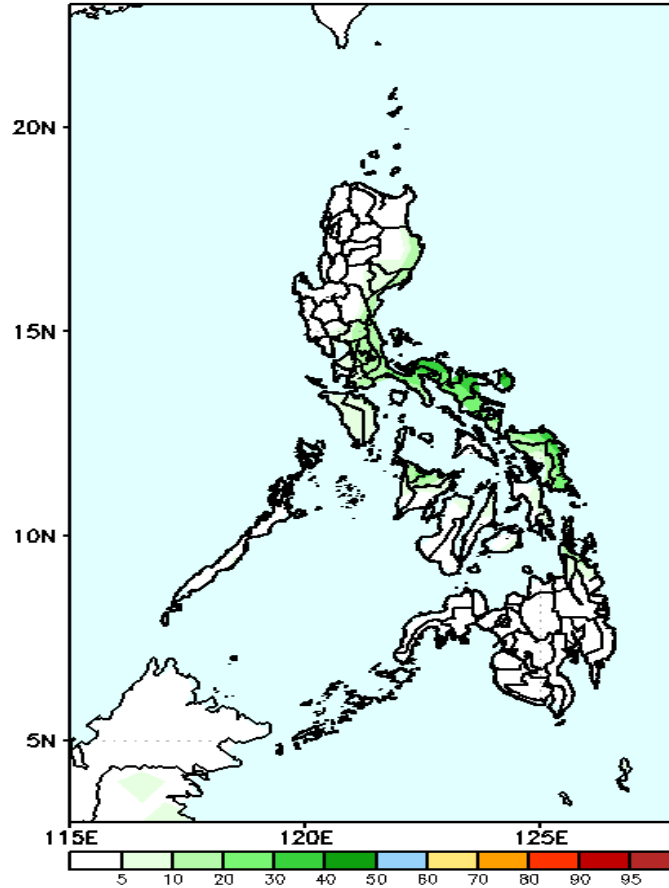
Week 2: Dec 06-12, 2021

GEFS Week-2 Exceedance Prob. > 100mm
Valid: 20211206 – 20211212



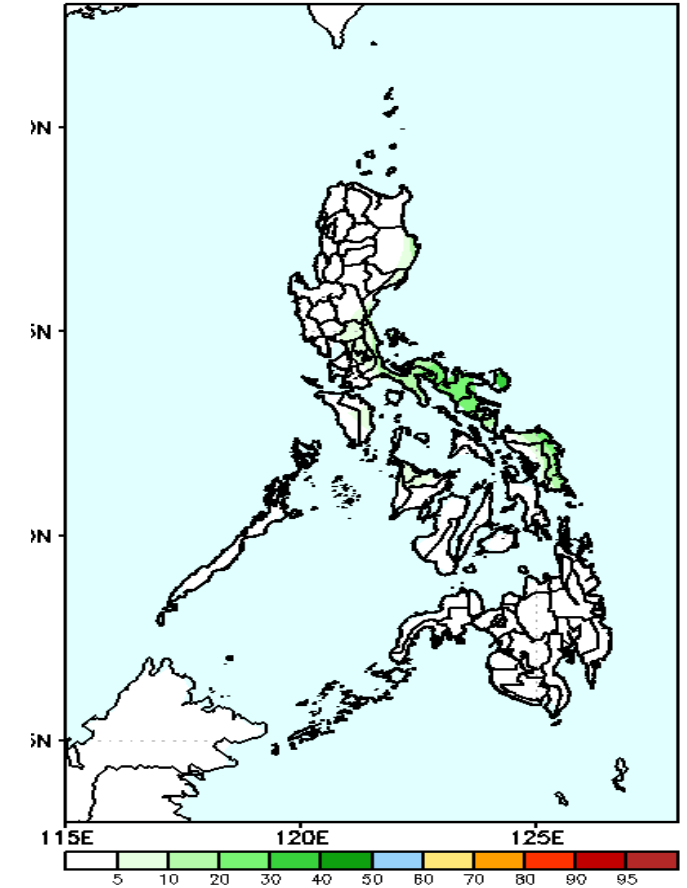
Less probability of rainfall to exceed 100mm in most parts of the country is expected during the forecast period.

GEFS Week-2 Exceedance Prob. > 150mm
Valid: 20211206 – 20211212



Less probability of rainfall to exceed 150mm in most parts of the country is expected during the forecast period.

GEFS Week-2 Exceedance Prob. > 200mm
Valid: 20211206 – 20211212

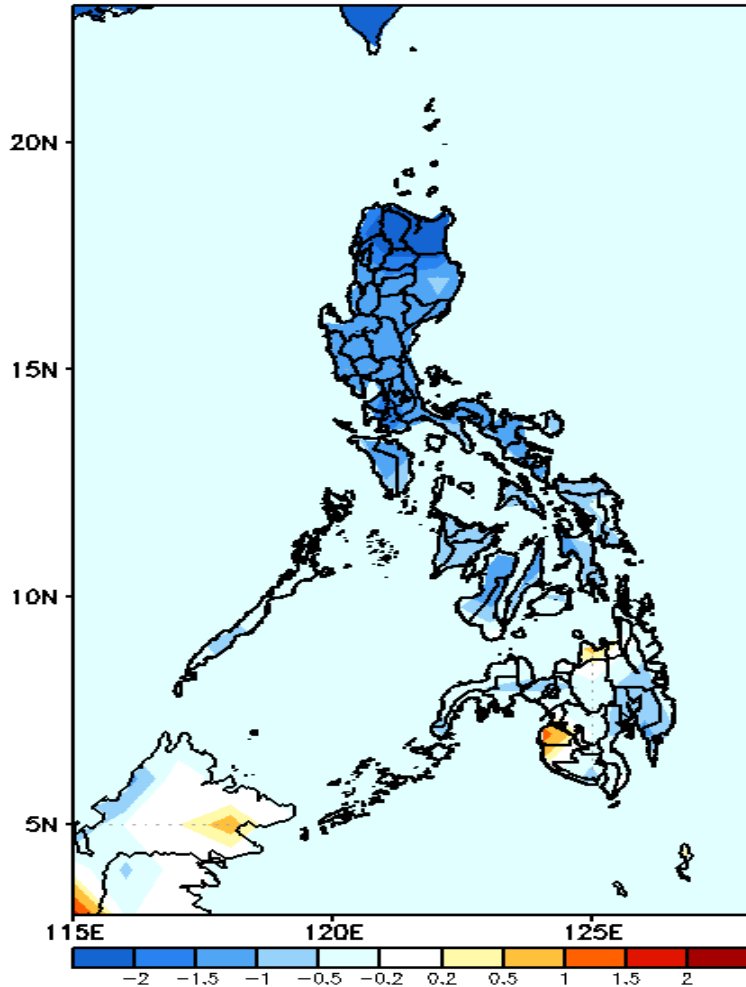


Less probability of rainfall to exceed 200mm in most parts of the country is expected during the forecast period.



GEFS Week-1 & 2 Forecasts: T2m Anomaly

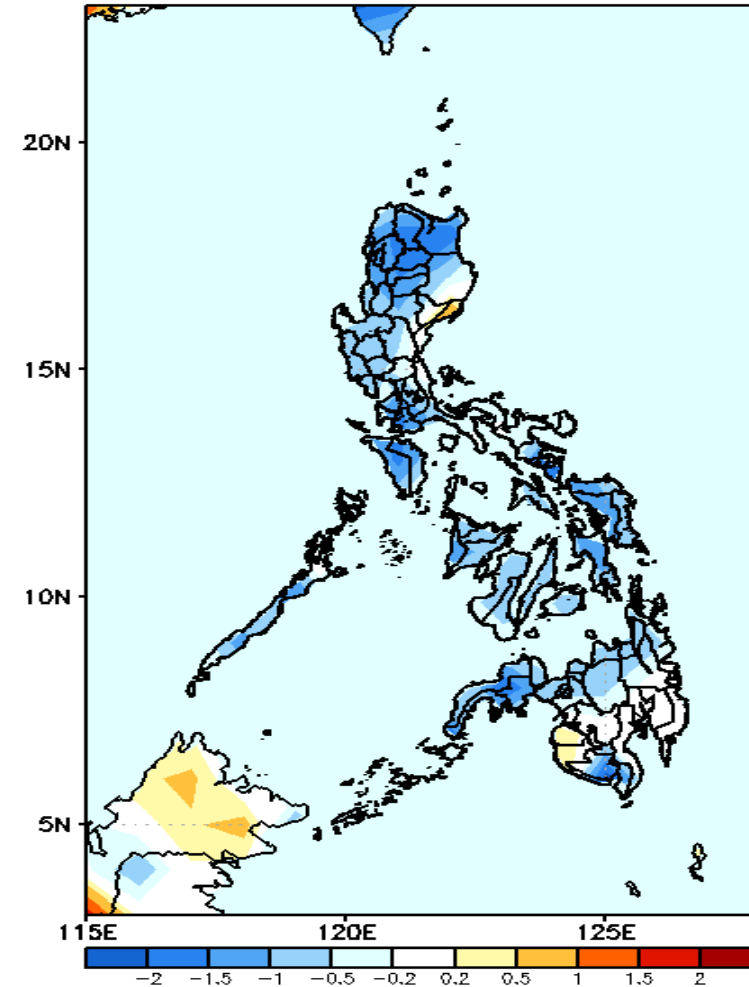
GEFS Week-1 T2m Anomaly
Valid: 20211129 - 20211205



2m Temperature Week 1: Nov 29--Dec 05, 2021

Slightly cooler to cooler than average surface air temperature will likely experience in most parts of Luzon & Visayas while average to slightly cooler in Mindanao during the forecast period.

GEFS Week-2 T2m Anomaly
Valid: 20211206 - 20211212



2m Temperature Week 2: Dec 06-12, 2021

Slightly cooler to cooler than average surface air temperature will likely experience in most parts of the country except in Eastern Luzon and southern Mindanao where Average temperature is expected during the forecast period.